

Reflector luminaire RL2

Design: Reflector luminaire with aluminium or plastic reflector, IP20 protection rating. IP40 when used with panel attachments.

Suitable for lamps ranging from 60 W compact fluorescent to 400 W high pressure discharge.

Luminaire housing constructed of die cast aluminium in powder coat finish similar to white aluminium (RAL 9006), with integrated retaining bracket for fastening accessories. Generously dimensioned cooling fins allow efficient heat dissipation even at high output levels.

Low loss wire wound 230V - 50Hz, or electronic ballast (EVG), 220-240V, 0/50 - 60 Hz. Electrical connection by means of an externally accessible IP40 rated socket located on the top of the gear housing.

An appropriate 'unwired' plug is supplied with the gear housing for on site wiring.

Mounting: Wire pendant, tube pendant, chain and ceiling mounting are possible using appropriate accessories.

Reflectors: Clear plastic reflectors in polycarbonate (PC) or acrylic (PMMA) with light refracting prisms. Various visor attachments in plastic are available to match the reflectors.

Aluminium reflectors in super-purity anodised aluminium, for various light distribution patterns. Panel attachments with single sheet of toughened safety glass are available with clip fastening or clamping ring.

RL2 ... PC

Clear reflector PC made of polycarbonate with light refracting external prisms.

RL2 ... PM

Clear reflector PM made of acrylic (PMMA) with light refracting external prisms.

RL2 ... SM

Parabolic reflector SM in matt satin, super-purity aluminium finish.

RL2 ... SMB

Parabolic reflector SMB in super-purity anodised aluminium with matt satin surface, wide distribution.

RL2 ... SMD

Parabolic reflector SMD in super-purity anodised aluminium with matt satin decorative faceted surface.

RL2 ... SMT

Parabolic reflector SMT in super-purity anodised aluminium with matt satin surface, narrow distribution.

Voltage: 230V/50Hz
Protection class: IP 20/40
acc. to VDE 0711/0875



RL2 ... PC



RL2 ... PM



RL2 ... SM



RL2 ... SMB



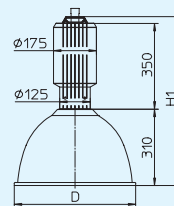
RL2 ... SMD



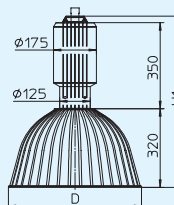
RL2 ... SMT



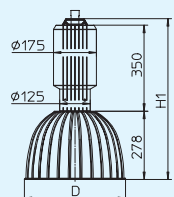
RL2-495 SMB/...



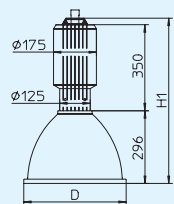
RL2-540 PC/PM/...



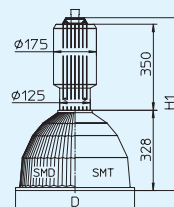
RL2-400 PC/PM/...



RL2-420 SM/...



RL2-485 SMD/SMT...



Model	Lamps	Lamp.	Dimens. [mm]		Trim attachments												magnetic ballast Prod. code	electronic ballast Prod. code	dim. ballast (DALI) Prod. code
			H1	D	B	C	D	E	J	K	N	Q	R	S	T				
RL2-400 PC/150-HSE-SI	1xHSE 150 W	E40	655	412	x	x	-	-	x	x	x	x	x	-	-	0301709SI			
RL2-400 PC/250-HIE/HSE-SI	1xHIE/HSE 250 W	E40	655	412	-	-	-	-	x	x	x	x	x	-	-	0301712SI			
RL2-400 PC/400-HIE/HSE-SI	1xHIE/HSE 400 W	E40	655	412	-	-	-	-	x	x	x	x	x	-	-	0301719SI			
RL2-400 PC/60-120 TCT-SI	1xTC-TELI 60/85/120 W	2G8	655	412	x	x	-	-	x	x	x	x	x	-	-		0321700SI		
RL2-400 PM/150-HSE-SI	1xHSE 150 W	E40	655	412	x	x	-	-	x	x	x	x	x	-	-	0301710SI			
RL2-400 PM/250-HIE/HSE-SI	1xHIE/HSE 250 W	E40	655	412	-	-	-	-	x	x	x	x	x	-	-	0301713SI			
RL2-400 PM/400-HIE/HSE-SI	1xHIE/HSE 400 W	E40	655	412	-	-	-	-	x	x	x	x	x	-	-	0301720SI			
RL2-400 PM/60-120 TCT-SI	1xTC-TELI 60/85/120 W	2G8	655	412	x	x	-	-	x	x	x	x	x	-	-		0321701SI		
RL2-420 SM/150-HSE-SI	1xHSE 150 W	E40	673	417	-	-	-	-	x	x	x	x	x	x		0301711SI			
RL2-420 SM/60-120 TCT-SI	1xTC-TELI 60/85/120 W	2G8	673	417	-	-	-	-	x	x	x	x	x	x			0321702SI		

Display lights RL2, Accessories for luminaire series RL ...

Model	Lamps	Lamph.	Dimens. [mm]		Trim attachments													magnetic ballast Prod. code	electronic ballast Prod. code	dim. ballast (DALI) Prod. code		
			H1	D	B	C	D	E	J	K	N	Q	R	S	T							
N RL2-495 SMB/250-HIE/HSE-SI	1xHIE/HSE 250 W	E40	688	494	-	-	-	-	x	x	x	x	x	x	x	x	x	x	x			
N RL2-495 SMB/400-HIE/HSE-SI	1xHIE/HSE 400 W	E40	688	494	-	-	-	-	x	x	x	x	x	x	x	x	x	x	x			
N RL2-485 SMD/250-HIE/HSE-SI	1xHIE/HSE 250 W	E40	705	485	-	-	-	-	x	x	x	x	x	x	x	x	x	x	x			
N RL2-485 SMD/400-HIE/HSE-SI	1xHIE/HSE 400 W	E40	705	485	-	-	-	-	x	x	x	x	x	x	x	x	x	x	x			
N RL2-485 SMT/250-HIE/HSE-SI	1xHIE/HSE 250 W	E40	705	485	-	-	-	-	x	x	x	x	x	x	x	x	x	x	x			
N RL2-485 SMT/400-HIE/HSE-SI	1xHIE/HSE 400 W	E40	705	485	-	-	-	-	x	x	x	x	x	x	x	x	x	x	x			
N RL2-540 PC/250-HIE/HSE-SI	1xHIE/HSE 250 W	E40	698	543	x	x	-	-	x	x	x	x	x	x	-	-	-	-	-			
N RL2-540 PC/400-HIE/HSE-SI	1xHIE/HSE 400 W	E40	698	543	x	x	-	-	x	x	x	x	x	x	-	-	-	-	-			
N RL2-540 PM/250-HIE/HSE-SI	1xHIE/HSE 250 W	E40	698	543	x	x	-	-	x	x	x	x	x	x	-	-	-	-	-			
N RL2-540 PM/400-HIE/HSE-SI	1xHIE/HSE 400 W	E40	698	543	x	x	-	-	x	x	x	x	x	x	-	-	-	-	-			

Accessories for luminaire series RL ...

ID	Model	Description	Prod. code	Image		
B	HRL-VLF 300 PC	Visor attachment for 300 reflector, flat transparent PC	0202508			
B	HRL-VLF 400 PC	Visor attachment for 400 reflector, flat transparent PC	0202511			
N B	HRL-VLF 540 PC	Visor attachment for 540 reflector, flat transp. PC	0202498			
C	HRL-VLK 300 PM	Visor attachment for 300 reflector, conical prismatic PMMA	0202507			
C	HRL-VLK 400 PM	Visor attachment for 400 reflector, conical prismatic PMMA	0202512	HRL-VLF, HRLVL F	HRL-VLK, HRLVL K	HRLVL H
N C	HRL-VLK 540 PM	Visor attachment for 540 reflector, conical prismatic PMMA	0202499			
D	HRL-VLH 300 PM	Visor attachment for 300 reflector, dished transp. PMMA	0202509			
E	HRL-VLH 300 PC	Visor attachment for 300 reflector, dished transp. PC	0202510			
N J	RL-SPO 1,5	Wire pendant for RL.1/RL.2 1,5m with loop, 1 pc.	0202425			
N J	RL-SPO 3,0	Wire pendant for RL.1/RL.2 3,0m with loop, 1 pc.	0202426			
N K	RL-HK	Chain fixing for RL.1/RL.2, 1 pc.	0202427	RL-HK	RL-SPO	RL-VSC
K	SLKG	Chain S-Link, max.20kg, per unit	0200906			
K	TRA 008	Galvanised chain, max. 20kg, per metre	0200251			
K	VLKH	Carabiner hook, max. 20kg, 1pc	0205888			
N N	RL-DB	Ceiling fixing for RL.1/RL.2	0202428			
N Q	ZRP 050 SI	Tube pendant 500mm with canopy, silver, 1 set = 1 pc	0200246SI			
N Q	ZRP 100 SI	Tube pendant 1000mm with canopy, silver, 1 set = 1 pc	0200247SI			
N Q	ZRPA	Hook for pendant with shortened tubular suspension, dia 13	0050564	RL-VSR	SLKG, VLKH	TRA 008
R	UKNS	Wire suspension c/w ceiling fixture, wire clamp, 1,5m, 1 pc	0210958			
N S	RL-VSC 320	Glass panel attachment for 320 refl. with clip fixture	0202385			
N S	RL-VSC 420	Glass panel attachment for 420 refl. with clip fixture	0202387			
N S	RL-VSC 485	Glass panel attachment for 485 refl. with clip fixture	0202389			
N S	RL-VSC 495	Glass panel attachment for 495 refl. with clip fixture	0202391			
N T	RL-VSR 320	Glass panel attachment for 320 refl. with ring fixture	0202386			
N T	RL-VSR 420	Glass panel attachment for 420 refl. with ring fixture	0202388	UKNS	ZRP-SI	ZRPA
N T	RL-VSR 485	Glass panel attachment for 485 refl. with ring fixture	0202390			
N T	RL-VSR 495	Glass panel attachment for 495 refl. with ring fixture	0202392			